



MULTICERAMICS™ is a one part insulation coating composed of high performance nano technology with tough elastomeric acrylics, and waterborne resin additives in a formulation of a special blend of multi-ceramics that block better than 95% of the sun's radiant heat, visual light, ultra violet and infrared rays. **MULTICERAMICS™** is an enduring flexible membrane that is absolutely water proof and will not rehydrate, making it a single coating roof top coat, that will perform even under a water ponding roof without losing adhesion.

TYPICAL USES:

As a one-coat insulation system on exterior and interior substrates (roofs, walls, and floors).

As an insulator for transportation vehicles, refrigerated railroad cars and containers. As insulation to stop condensation on HVAC systems, tanks, and storage systems, a one-coat protective system over metal, concrete, masonry, and wood to stop water penetration and corrosion, resist dirt, mold, mildew, and pollution, increase longevity, and reduce maintenance



MULTICERAMICS™ outperforms in side by side tests, other insulating ceramics coatings that cost twice as much, and are not water proof. The secret is an innovative formulation that uses the latest chemistry and discoveries available to science.

PHYSICAL DATA:

Solids: By weight 62% / By volume 68%.

Film Thickness: **MULTICERAMICS™** should be applied at 14 mils wet / 7 mils dry.

Dry Time: One hour to touch at 70F. degrees
Overcoat window is one hour or longer at 70F. degrees / Fully cures in 5 days. **Lead and chromate free.**

Weight: 7.5 lbs. per gallon.

Shelf Life: up to 3 years (unopened) under appropriate storage conditions. **Cures by evaporation** with no co-solvents present.

VOC: 0 grams/liter.

pH: 8.0 - 9.0.

Viscosity: 110 KU.

APPLICATION METHODS:

MULTICERAMICS™ can be applied to metal, concrete, masonry, and wood. The application can be by spray, brush, or roller. For specific instructions on surface preparation, mixing, and application, please refer to the application instructions on the label.

Do not use this product without first taking all appropriate safety measures to prevent any property damage and injuries. These measures may include, proper ventilation, wearing of protective clothing and masks, tenting, and proper separation of application areas.

Metal structures should be primed with **RUSTVACCINE™**.

MULTICERAMICS™ can be applied by brush, roller or spray equipment. Apply in 1 or 2 coats to obtain desired insulation.

KEEP OUT OF REACH OF CHILDREN.

LIMITATION OF LIABILITY: This data sheet and tests performed are intended for guidance only. All recommendations or suggestions relating to the use of the products, whether in technical documentation, or in response to a specific enquiry, or otherwise, are based on data which to the best of our knowledge is reliable. The products and information are designed for users having the required knowledge and skills, and the end-user has the responsibility to determine the suitability of the product for its intended use.

We have no control over either the quality or condition of the substrate, or the many factors affecting the use and application of the product.

Therefore, WALLPANEL Inc. does not accept any liability arising from loss, injury, or damage resulting from the use or the contents of this data sheet (unless

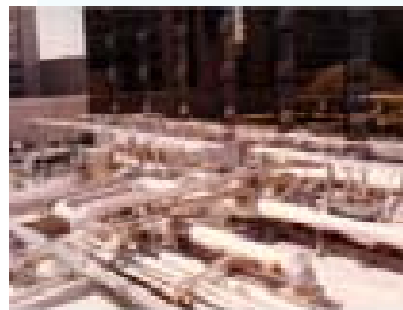
MultiCeramics™

Roof applications water proof and insulate in the Arizona desert. Temperatures inside were reduced dramatically saving energy and providing enhanced comfort.



The metal is coated with MULTICERAMICS in a one inch strip in the middle of one side only, one extreme of the metal strip is heated with this butane torch to 1500F. This would be impossible to be held if the coating did not stop the conduction through the surface of the metal. MULTICERAMICS really works! This test could not be performed with regular paint, nor with fiberglass, foam, or other insulators.

Insulating air transport systems in conditioners installation on roof top for Hotels in Las Vegas, reduces the electrical consumption dramatically. MULTICERAMICS can be tinted to suit any requirement.



POWER CORRECTION SYSTEMS, INC. 1800 S. Robertson Blvd., Suite 419, Los Angeles, CA 90035

Tel. (310)247-4848 (Office) (310)505-2137 (Cell)

Email: bsegal@activeharmonicfilters.com www.activeharmonicfilters.com